



## INSTALLATION INSTRUCTIONS FOR PART 99-9600

### APPLICATIONS

# Harley-Davidson 1998-2013

(FL models with fairings)

## 99-9600

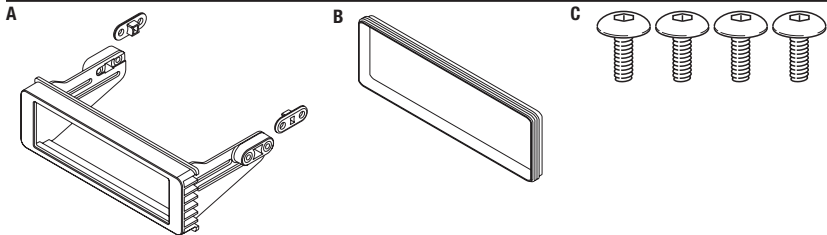


### KIT FEATURES

- ISO DIN radio provision
- Pre wired ASWC-1 harness included (Axxess ASWC-1 sold separately for retention of handlebar controls).

### KIT COMPONENTS

- A) Radio housing • B) Rubber gasket • C) (4) 1/2" long button-head cap screws • D) Pre-wired ASWC-1 harness (not shown)



### WIRING & ANTENNA CONNECTIONS (sold separately)

Wiring Harness: • Included

Antenna Adapter: • Not required

### Table of Contents

#### Fairing Disassembly

- Harley-Davidson FLH, batwing fairing  
1998-2013 ..... 2-3
- Harley-Davidson Roadglide, sharknose fairing  
1998-2013 ..... 4-5

#### Kit Assembly

- ISO DIN radio provision..... 6

### TOOLS REQUIRED

- Panel removal tool • Phillips screwdriver
- Socket wrench (T-25, T-27, 6mm or 3/16 hex)

**CAUTION:** Metra recommends disconnecting the negative battery terminal before beginning any installation. All accessories, switches, and especially air bag indicator lights must be plugged in before reconnecting the battery or cycling the ignition.

**NOTE:** Refer to the instructions included with the aftermarket radio.

REV. 2/19/2014 INST99-9600

## Fairing Disassembly

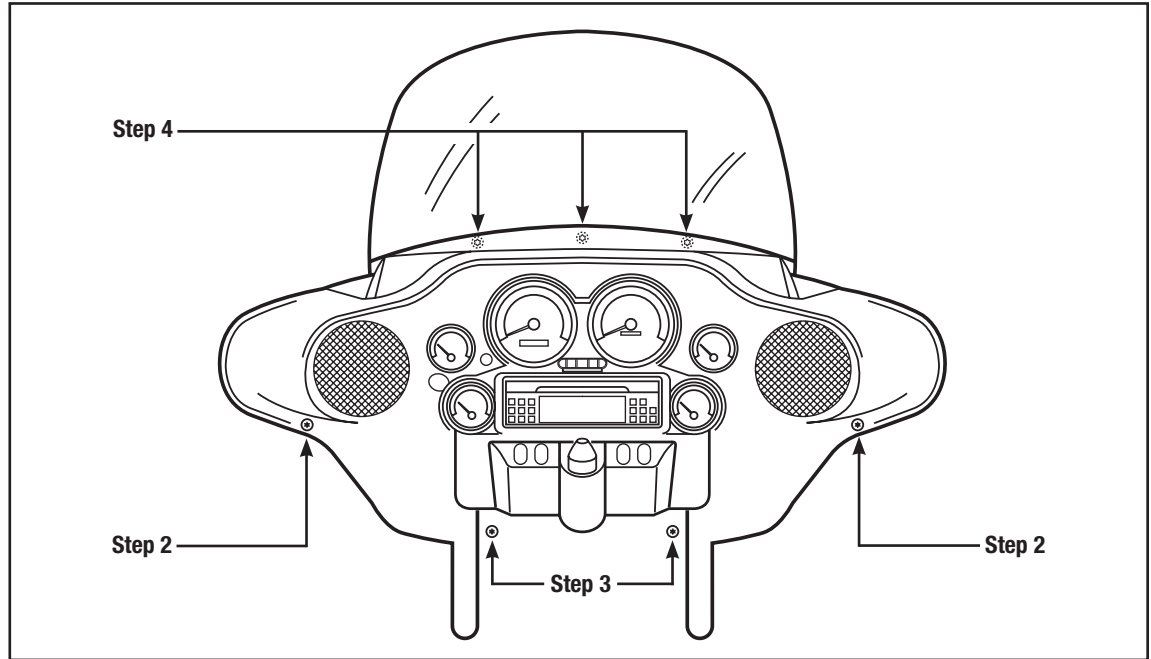
### FLH/Batwing models:

1. Cover the front fender.
2. Remove (2) T-27 Torx bolts from inner fairing (under mirrors) (Figure A, step 2)
3. Remove (2) T-27 Torx bolts from outer edges of inner fairing near the fork tubes (facing forward) (Figure A, step 3)
4. Remove (3) T-27 Torx bolts from bottom edge of windshield. (Figure A, step 4)

**NOTE: Windshield and fairing will be loose once these screws are removed. Use extreme caution not to damage fairing or windshield.**

5. Remove windshield taking caution that the outer fairing is loose.

*Continued on next page*



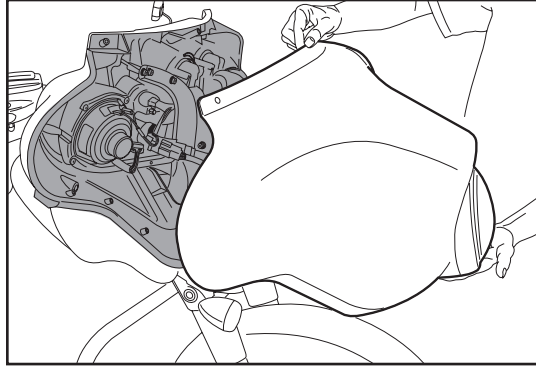
(Figure A)

## Fairing Disassembly

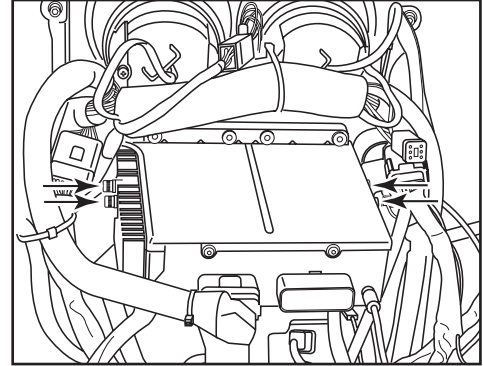
### FLH/Batwing models: (cont.)

6. Lift away and unplug headlight to remove outer fairing. (Figure B)
7. Extract (2) 3/16" Allen bolts from each side of the radio housing. (Figure C)
8. Remove the factory radio.

*Continue to kit assembly*



(Figure B)



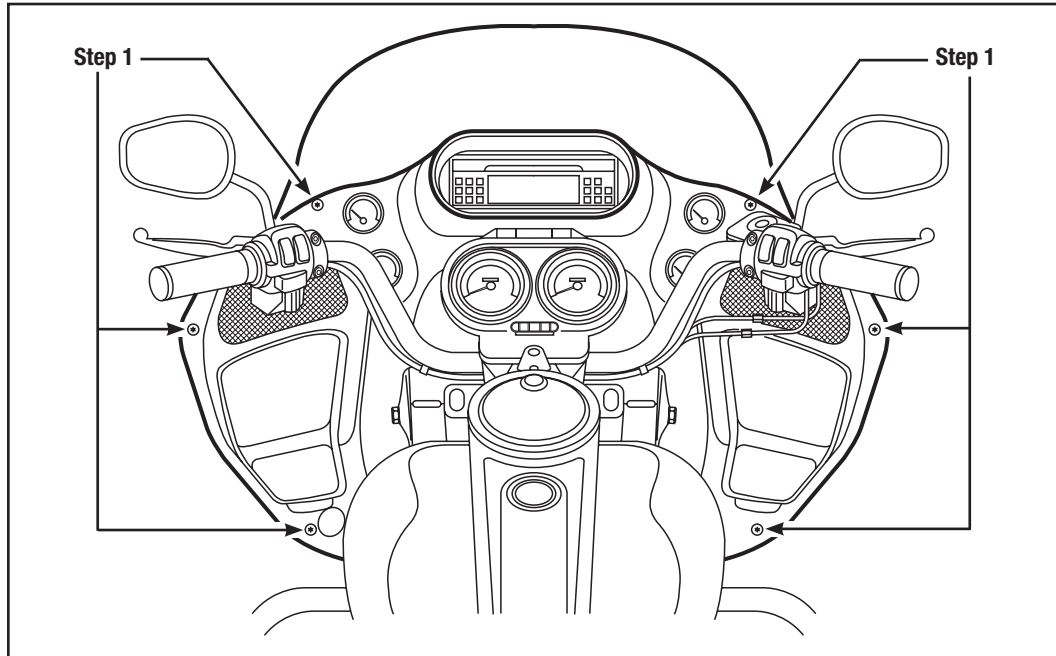
(Figure C)

## Fairing Disassembly

### Roadslide/Sharknose models

1. Loosen (6) T-25 Torx bolts from bottom, middle and top of left and right sides of the inner fairing. (Figure A)

*Continued on next page*



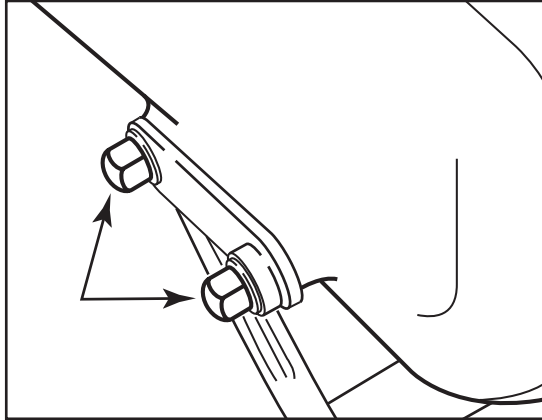
(Figure A)

## Fairing Disassembly

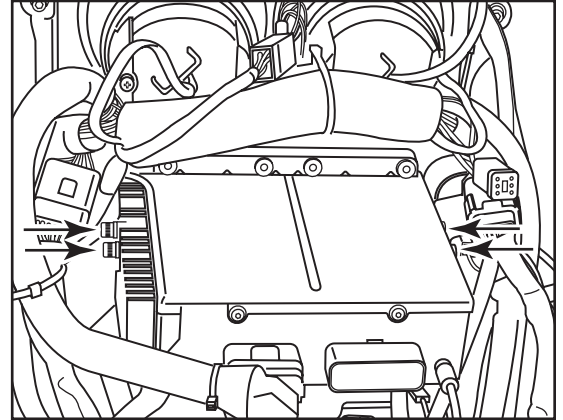
### Roadglide/Sharknose models (cont.)

2. Use a 1/2" socket or box wrench to remove the (2) acorn nuts that hold each turn signal at the lower fairing. Let the signals hang loose. (Figure B)
3. Lift away the fairing, unplug the headlights and remove.
4. Remove (2) 3/16" Allen bolts from each side of the radio housing. (Figure C)

*Continue to kit assembly*



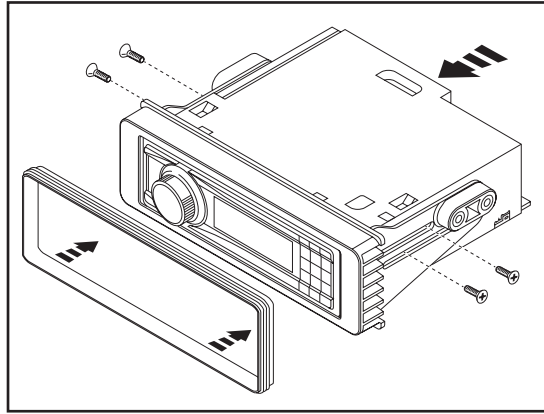
(Figure B)



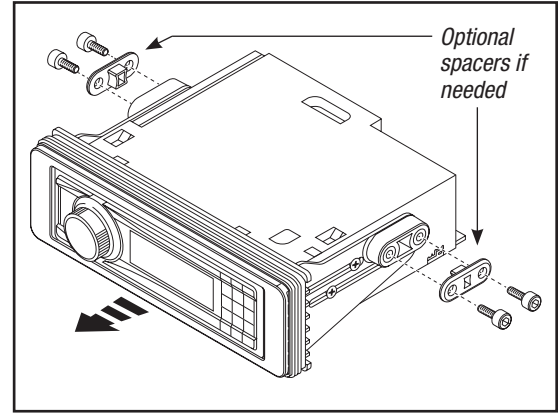
(Figure C)

## Kit Assembly

1. Slide the radio into radio housing and secure with screws supplied with the radio. (Figure A)
2. Slide the rubber gasket over the front edge of the radio housing. (Figure A)
3. Insert the radio and kit assembly into the factory radio opening from the back side of the inner fairing. (Figure B)
4. Secure with the factory hardware, or the included button-head screws. (Figure B)
5. Locate the factory wiring harness and antenna plug in the dash. Metra recommends using the proper mating adapters. Use the included wiring harness. The AXCESS ASWC-1 interface is sold separately for retention of factory handlebar controls.
6. Reassemble bike in reverse order of disassembly.



(Figure A)



(Figure B)





## INSTALLATION INSTRUCTIONS FOR PART 99-9600



REV. 2/19/2014 INST99-9600



### KNOWLEDGE IS POWER

Enhance your installation and fabrication skills by enrolling in the most recognized and respected mobile electronics school in our industry. Log onto [www.installerinstitute.com](http://www.installerinstitute.com) or call 800-354-6782 for more information and take steps toward a better tomorrow.



**Metra recommends MECP certified technicians**